



How High Can You Measure the Wind?

SGSI Introduces the new standard in hub-height wind data monitoring with 80m and 100m tilt-up towers.

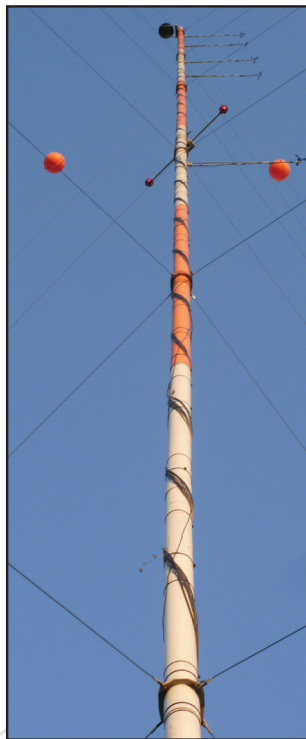
Reaching new heights reliably and cost effectively. As the wind industry demands higher reaching data, modern met towers are rising to meet the challenge. Seventh Generation Systems Integration offers turnkey installation of 80 and 100 meter met masts that achieve industry standards for accurate, affordable hub-height wind data.



**SEVENTH
GENERATION
SYSTEMS
INTEGRATION**

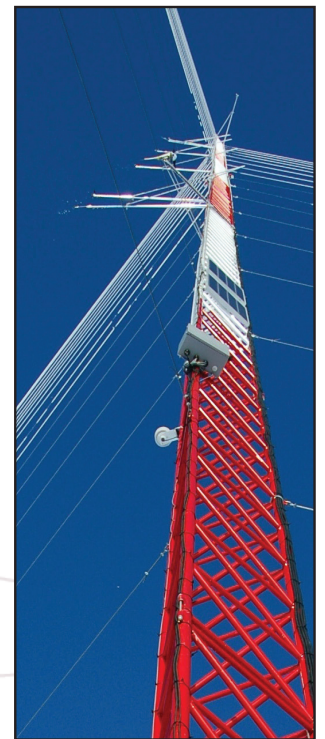
NRG 80 METER MET TOWERS

NRG Systems is the industry leader in steel tube tilt-up towers, and our SGSI met tower crews are experts at installing NRG tilt-up towers. We join our customers in welcoming an 80 meter version of the tried and true NRG tall tower. The NRG 80-meter can be ordered as the familiar NOW package or customized by SGSI technicians with Class I sensors, advanced data loggers, and off-grid light and power systems to meet the specific needs of your project.



DOUBLE-K 80 AND 100 METER MET TOWERS

Double-K's aluminum lattice met towers are specifically designed for meteorological purposes. The light but steady construction does not require concrete foundations and makes the transportation and installation very cost effective. Guy wires, anchors and other components are made of zinc galvanized steel for lasting durability and can be used over and over again. The entire structure is designed to withstand extreme wind and ice loads in a wide range of terrain and climate conditions. Double-K's towers are fully climbable and ideal for temporary or permanent installations.



OTHER HUB-HEIGHT OPTIONS:

SGSI offers turnkey installation of a variety of other tall towers, including monopole, free-standing lattice and guyed lattice. SGSI's experienced tower climbers provide ongoing maintenance on all climbable tower types. SGSI also offers full support for remote sensing system deployment and maintenance.

